



TOWY USK COMMUNITY UPDATE JANUARY 2025

We are pleased to share an update on the 132kV Towy Usk project as part of our commitment to keeping the community and stakeholders informed as the project progresses.

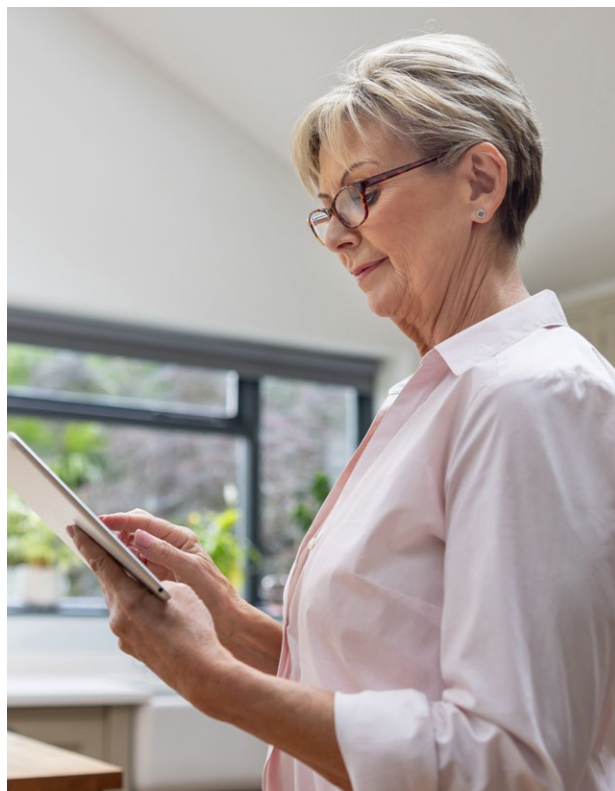
Tackling the climate emergency, connecting new community and renewable energy projects, creating and expanding businesses and electrifying our heating and transport systems will all require more grid capacity. Towy Usk is part of Green GEN Cymru's commitment to building new energy infrastructure that meets the needs of local communities and supports a sustainable future for Wales.

THANK YOU FOR YOUR FEEDBACK

Thanks to everyone who took part in our Stage 2 non-statutory consultation from 13 March to 8 May 2024.

We are grateful for your continued interest and engagement in the Towy Usk project. Feedback from local communities, authorities, community councils, and national organisations is playing a vital role in shaping our plans. You've provided valuable information on a range of key issues, including the potential visual, environmental and ecological impacts of an overhead line, potential impacts on tourism and the local economy, and Green GEN Cymru's exploration of undergrounding options.

We are carefully reviewing this feedback as we refine the route and design for the Towy Usk connection. A comprehensive consultation report detailing all feedback and how it has been addressed will be available at our statutory consultation.



ENVIRONMENTAL AND TECHNICAL SURVEYS

Over the past eight months, we have continued to carry out environmental and technical surveys along the preferred route that we consulted on in spring 2024. In response to the detailed feedback received, we will be widening these surveys in some areas to include additional land alongside the preferred route.

By broadening the survey areas, we can better assess the project's potential effects and ensure that we make well-informed decisions at each stage of the detailed routing and design of the Towy Usk connection. This reflects the request from communities to thoroughly assess all potential impacts, considering the full range of community, environmental, and technical factors.



WHAT HAPPENS NEXT?

The findings of the surveys will inform our Environmental Impact Assessment (EIA) and will help us develop a detailed alignment for the overhead line route, including the locations for pylons, potential underground sections, access routes, and working areas.

There will be another round of consultation, where people will be able to review and comment on the detailed designs and the draft Environmental Statement before the consent application is submitted to Planning and Environment Decisions Wales (PEDW).

Our dedicated lands team continues to work with landowners and occupiers who may be affected by our proposals to agree access and survey schedules, ensuring minimal disruption wherever possible.

As we move forward, we will keep you informed on the progress of these surveys ahead of carrying out the statutory consultation, which is currently scheduled for late 2025.



THANK YOU ONCE AGAIN FOR YOUR ONGOING ENGAGEMENT IN THE TOWY USK PROJECT.

STAY INFORMED

If you'd like to discuss our Towy Usk proposals, please contact us using the details below.



www.greengentowyusk.com



info@greengentowyusk.com



0800 3777 339



**GREEN
GEN
TOWY USK**

To stay updated on the project, please register your contact details with us. [> Register here.](#)

GRID CAPACITY AND LOCAL CONNECTIONS



Tackling the climate emergency, connecting new community and renewable energy projects, creating and expanding businesses and electrifying our heating and transport systems will all require more grid capacity. These are challenges that Wales faces and ones that we are trying to help address.

Green GEN Cymru is an Independent Distribution Network Operator and received our license from Ofgem in July 2024. Our proposed distribution lines offer much needed grid capacity and resilience to the areas around our network.

Since the issuing of our license, we can now welcome both new energy generators of all scales and energy users to apply to connect into our lines, unlocking both Wales's energy potential but also putting power back into the local network. New energy users could be anything that requires electricity from new and expanding businesses and new homes to electric vehicle charging points and the decarbonisation of our heating systems.

If you would like to connect to our network, or are interested in an initial feasibility discussion, please visit [Get Connected - Green GEN Cymru](#) to register your interest.



DIWEDDARIAD CYMUNEDOL TYWI WYSG – IONAWR 2025

Rydyn ni'n falch o gyhoeddi'r wybodaeth ddiweddaraf am brosiect 132kV Tywi Wysg fel rhan o'n hymrwymiad i roi'r wybodaeth ddiweddaraf i'r gymuned a rhanddeiliaid wrth i'r prosiect fynd rhagddo.

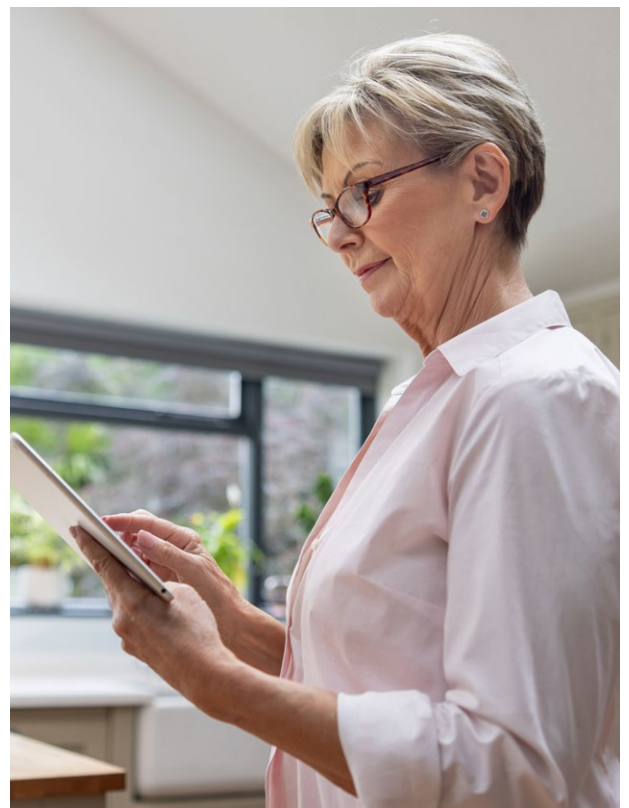
Bydd mynd i'r afael â'r argyfwng hinsawdd, cysylltu prosiectau ynni cymunedol ac adnewyddadwy newydd, creu ac ehangu busnesau a thrydaneiddio ein systemau gwresogi a thrafnidiaeth i gyd yn gofyn am fwy o gapasiti'r grid. Mae Tywi Wysg yn rhan o ymrwymiad Green GEN Cymru i adeiladu seilwaith ynni newydd sy'n diwallu anghenion cymunedau lleol ac sy'n cefnogi dyfodol cynaliadwy i Gymru.

DIOLCH AM EICH ADBORTH

Diolch i bawb a gymerodd ran yn ein hymgyngoriad anstatudol Cam 2 rhwng 13 Mawrth a 8 Mai 2024.

Rydyn ni'n ddiolchgar am eich diddordeb a'ch ymgysylltiad parhaus ym mhrosiect Tywi Wysg. Mae adborth gan gymunedau lleol, awdurdodau, cynghorau cymuned a sefydliadau cenedlaethol yn chwarae rhan hanfodol wrth lunio ein cynlluniau. Rydych chi wedi darparu gwybodaeth werthfawr am amrywiaeth o faterion allweddol, gan gynnwys effeithiau gweledol, amgylcheddol ac ecolegol posibl llinellau uwchben, effeithiau posibl ar dwristiaeth a'r economi leol ac archwiliad Green GEN Cymru o opsiynau tanddaearol.

Rydyn ni'n adolygu'r adborth hwn yn ofalus wrth i ni fireinio'r llwybr a'r dyluniad ar gyfer cysylltiad Tywi Wysg. Yn ein hymgyngoriad statudol, bydd adroddiad ymgynghori cynhwysfawr ar gael a fydd yn manylu ar yr holl adborth a sut mae hyn wedi cael sylw.



AROLYGN AMGYLCHEDDOL A THECHNEGOL

Dros yr wyth mis diwethaf, rydyn ni wedi parhau i gynnal arolygon amgylcheddol a thechnegol ar hyd y llwybr a ffefrir, yn dilyn ymgynghoriad yng ngwanwyn 2024. Mewn ymateb i'r adborth manwl a ddaeth i law, byddwn ni'n ehangu'r arolygon hyn mewn rhai ardaloedd i gynnwys tir ychwanegol wrth ochr y llwybr a ffefrir.

Trwy ehangu ffiniau'r arolwg, gallwn ni asesu effeithiau posibl y prosiect yn well a sicrhau ein bod ni'n gwneud penderfyniadau gwybodus ar bob cam o'r llwybr manwl a dyluniad cysylltiad Tywi Wysg. Mae hyn yn adlewyrchu'r cais gan gymunedau i asesu'r holl effeithiau posibl yn drylwyr, gan ystyried yr amrywiaeth lawn o ffactorau cymunedol, amgylcheddol a thechnegol.



BETH SY'N DIGWYDD NESAF?

Bydd canfyddiadau'r arolygon yn llywio ein Hasesiad Effaith Amgylcheddol a byddan nhw'n ein helpu ni i ddatblygu aliniad manwl ar gyfer llwybr y llinellau uwchben, gan gynnwys y lleoliadau ar gyfer peilonau, adrannau tanddaearol posibl, llwybrau mynediad, ac ardaloedd gwaith.

Bydd rownd arall o ymgynghori, lle bydd pobl yn gallu adolygu a rhoi sylwadau ar y dyluniadau manwl a'r Datganiad Amgylcheddol Drafft cyn cyflwyno'r cais am ganiatâd i adran Penderfyniadau Cynllunio ac Amgylchedd Cymru.

Mae ein tîm tiroedd ymroddedig yn parhau i weithio gyda pherchnogion a deiliaid tir y gallai ein cynigion effeithio arny'n nhw i gytuno ar amserlenni arolygon a mynediad, gan sicrhau cyn lleied o darfu â phosibl lle bynnag y bo modd.

Wrth i ni symud ymlaen, byddwn ni'n rhoi'r wybodaeth ddiweddaraf i chi am gynnydd yr arolygon hyn cyn cynnal yr ymgynghoriad statudol sydd wedi'i drefnu ar hyn o bryd ar gyfer diwedd 2025.



DIOLCH UNWAITH ETO AM EICH CYFRANOGIAD PARHAUS YM MHROSIECT TYWI WYSG.

WYBODAETH DDIWEDDARAF

Os hoffech drafod ein cynigion Tywi Wysg, cysylltwch â ni gan ddefnyddio'r manylion isod.



www.greengentowyusk.com



info@greengentowyusk.com



0800 3777 339



GREEN
GEN
TOWRY USK

I gael y wybodaeth ddiweddaraf, cofrestrwch eich manylion cyswllt gyda ni. > **Cofrestrwch yma.**

CAPASITI GRID A CHYSYLLTIADAU LLEOL



Mae yna angen fawr am fwy o gapasiti ar y grid yng Nghymru. Mae'r angen er mwyn ymdrin â'r argyfwng hinsawdd, i gysylltu prosiectau ynni cymunedol ac adnewyddadwy newydd, i greu ac ehangu busnesau ac i thrydaneiddio ein systemau gwresogi a thrafnidiaeth. Mae rhain yn heriau y mae Cymru'n ei hwynebu ac yn un yr ydym ni yn ceisio helpu i fynd i'r afael â hi.

Mae Green GEN Cymru yn Weithredydd Rhwydwaith Dosbarthu Annibynnol a derbyniodd ein trwydded gan Ofgem ym mis Gorffennaf 2024. Mae ein llinellau dosbarthu sydd yn cael eu cynnig yn cynnig capasiti a chydnerthedd grid i'r ardaloedd o amgylch ein rhwydwaith.

Ers derbyn ein trwydded, gallwn nawr groesawu generaduron ynni newydd o bob graddfa a defnyddwyr ynni i wneud cais i gysylltu â'n llinellau. Rydym yn datgloi potensial ynni Cymru ond hefyd yn rhoi pŵer yn ôl i'r rhwydwaith lleol. Gallai defnyddwyr ynni newydd fod yn unrhywbeth sy'n gofyn am drydan, o fusnesau a chartrefi newydd, i bwyntiau gwefru cerbydau trydan a datgarboneiddio ein systemau gwresogi.

Os hoffech gysylltu â'n rhwydwaith, neu os oes gennych ddiddordeb mewn trafodaeth gychwynnol, ewch i **Get Connected - Green GEN Cymru** i gofrestru eich diddordeb.