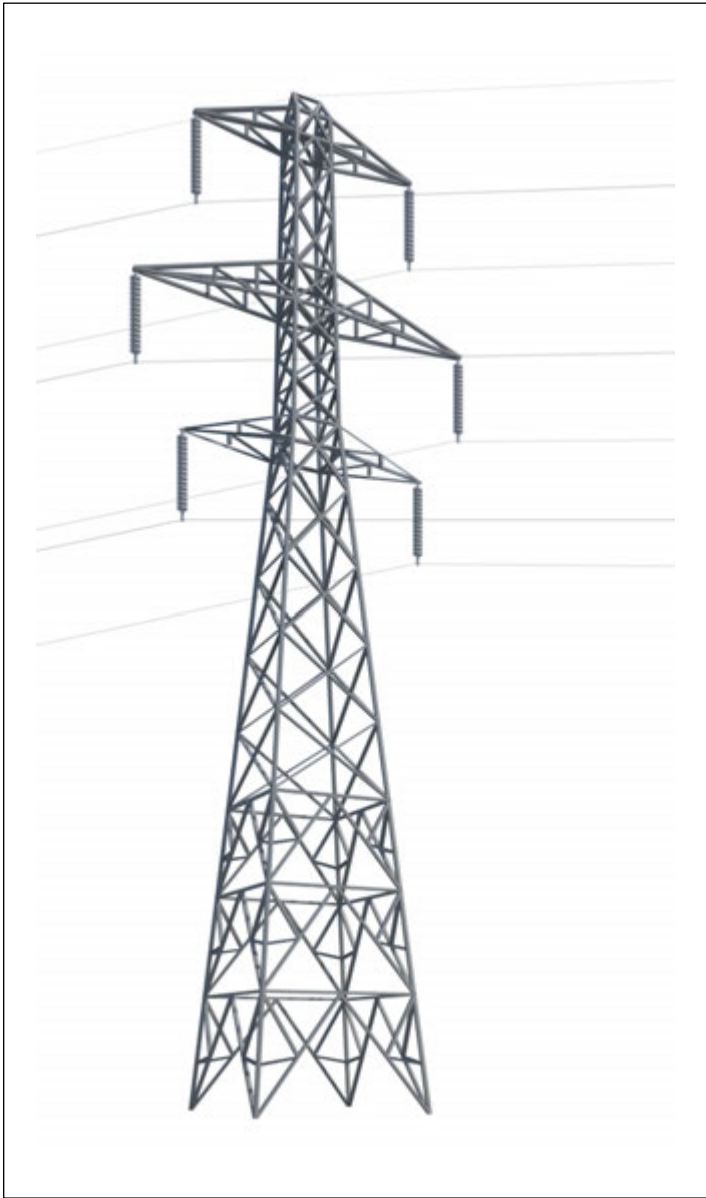


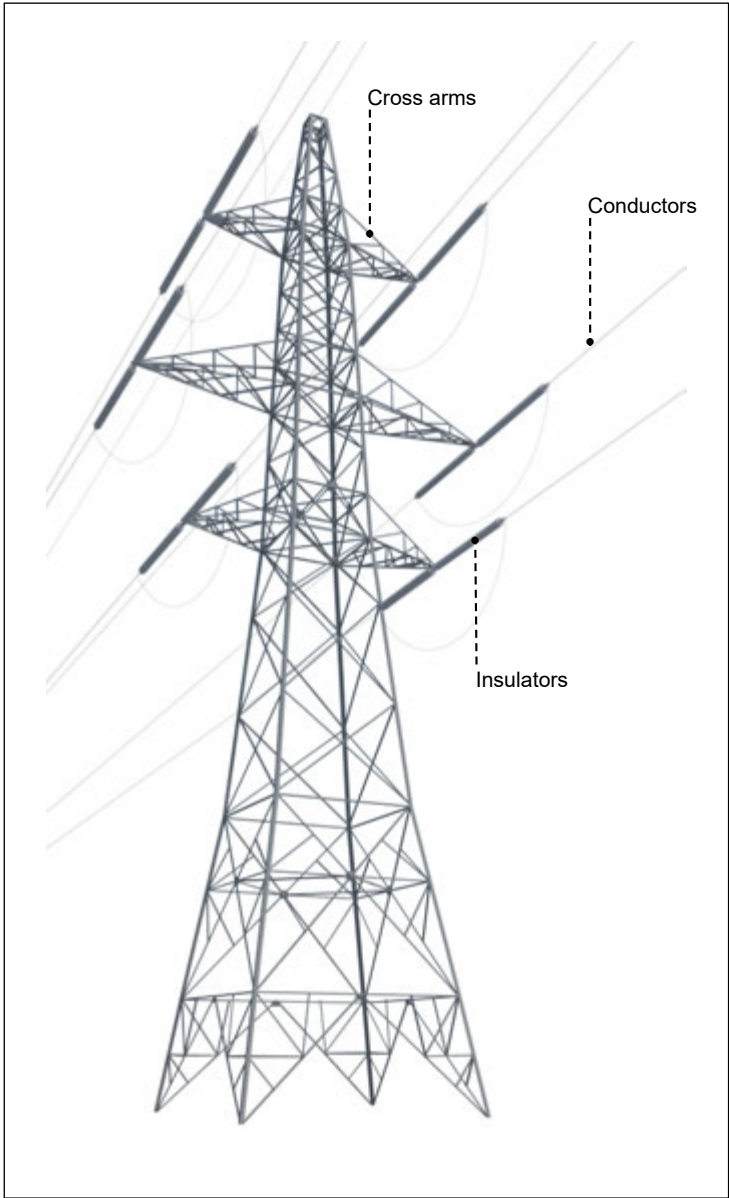
Figure 1.1: Existing Network and Points of Connection

- Nant Mithil Energy Park
- Substation Siting Area
- Overhead Line (OHL)
 - 400kV
 - 275kV
 - 132KV
 - 66KV
 - 33KV
- Underground Cable (UGC)
 - 132KV
 - 66KV
 - 33KV

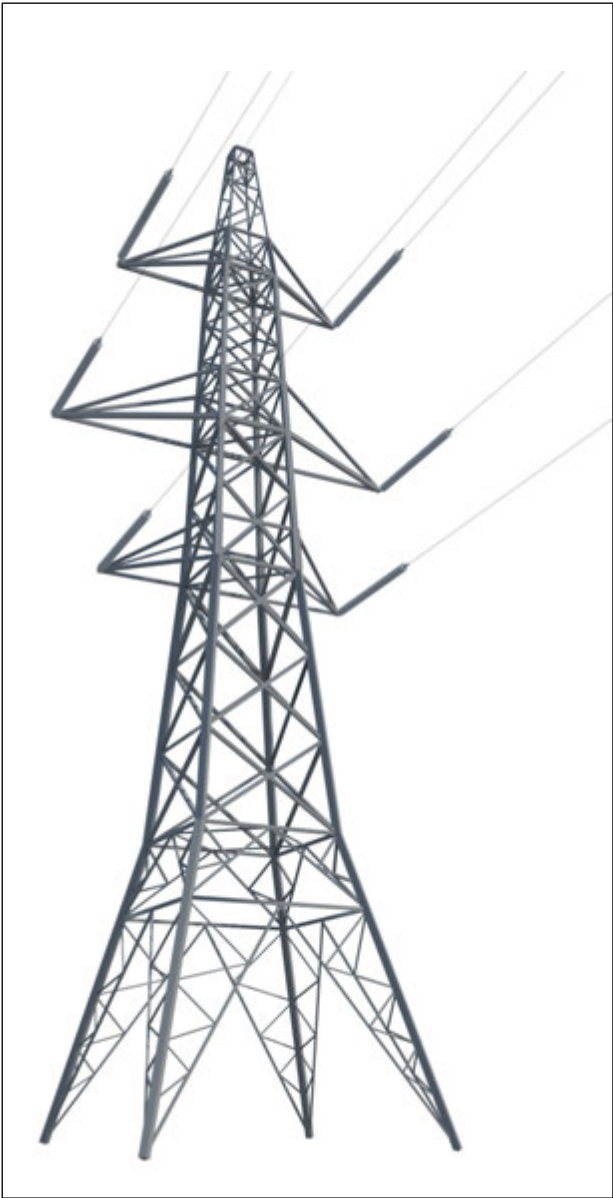
Figure 2.1: Proposed Tower Type



Component parts of 132kV steel lattice tower L7: Suspension tower

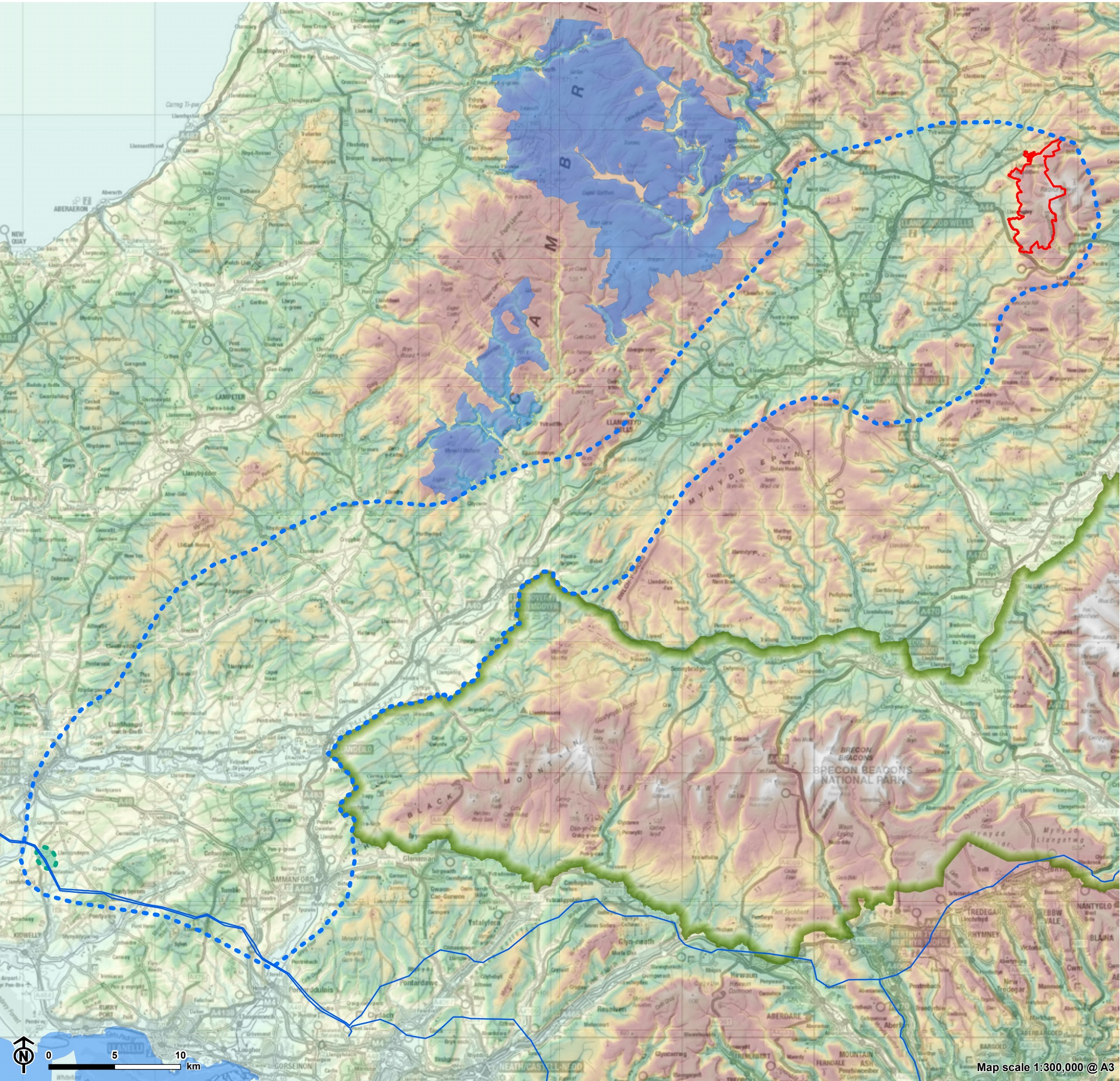


Component parts of 132kV steel lattice tower L7: Angle tower



Component parts of 132kV steel lattice tower L7: Terminal tower

Figure 4.1: Study Area



- Nant Mithil Energy Park
- Study Area
- Substation Siting Area
- 400kV Overhead Line (OHL)
- Terrain (AOD)
 - High
 - Low
- Brecon Beacons National Park
- Special Protection Area (SPA)

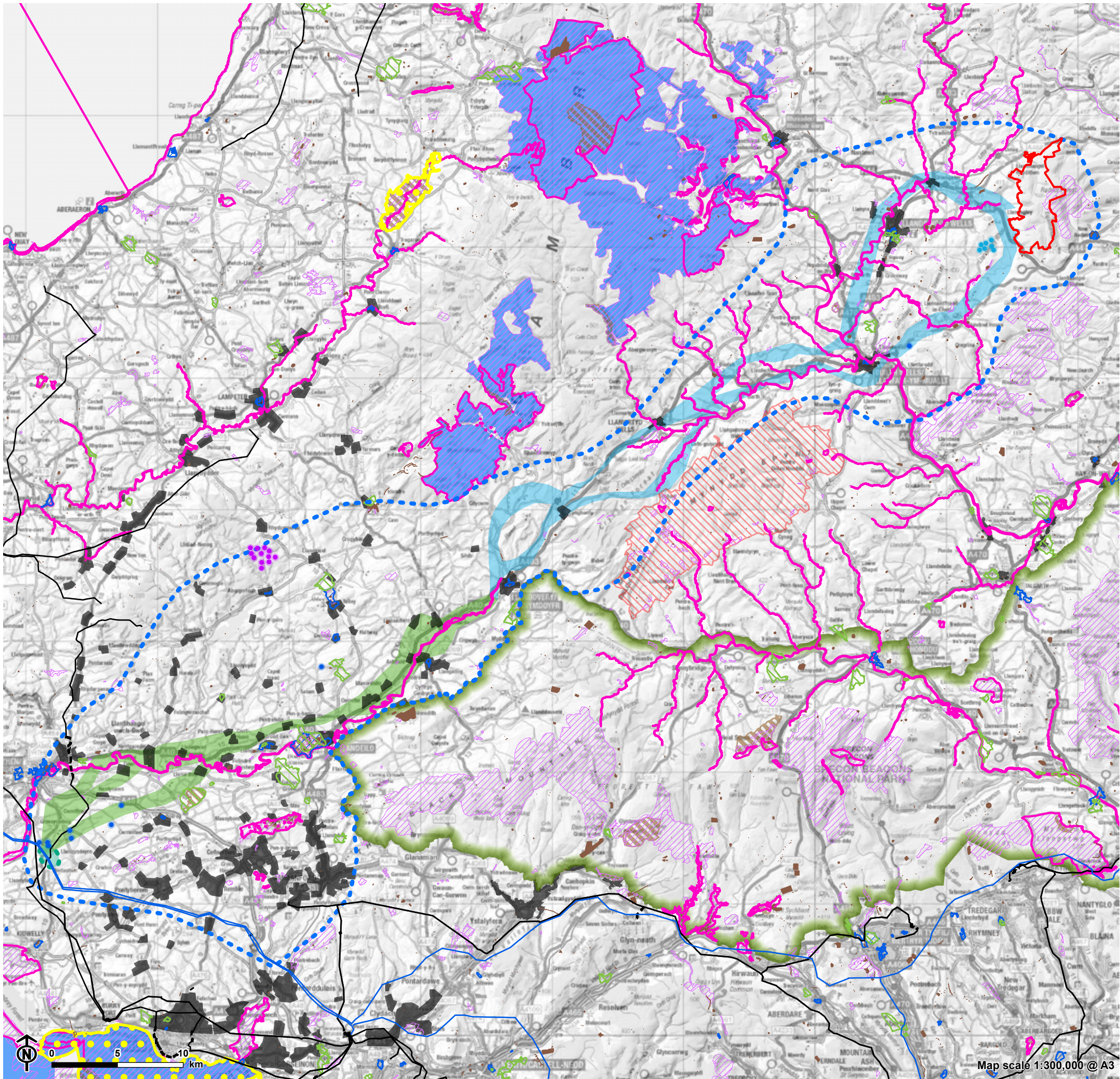


Figure 4.2.1: Considerations Influencing Corridor Option Selection

Key Constraints and Existing Infrastructure

- Nant Mithil Energy Park
- Study Area
- Substation Siting Area
- Route Corridors**
 - Section A
 - Section B
- Overhead Line (OHL)**
 - 400kV
 - 132KV
- Underground Cable (UGC)**
 - 132KV
- Wind Farm Status**
 - Operational
 - Under Construction
 - Consented
- Brecon Beacons National Park
- Settlement Boundaries
- Ramsar
- Special Area of Conservation (SAC)
- Site of Special Scientific Interest (SSSI)
- Special Protection Area (SPA)
- National Nature Reserve (NNR)
- Registered Historic Parks and Garden
- Scheduled Monument
- Conservation Area
- Sennybridge Training Area

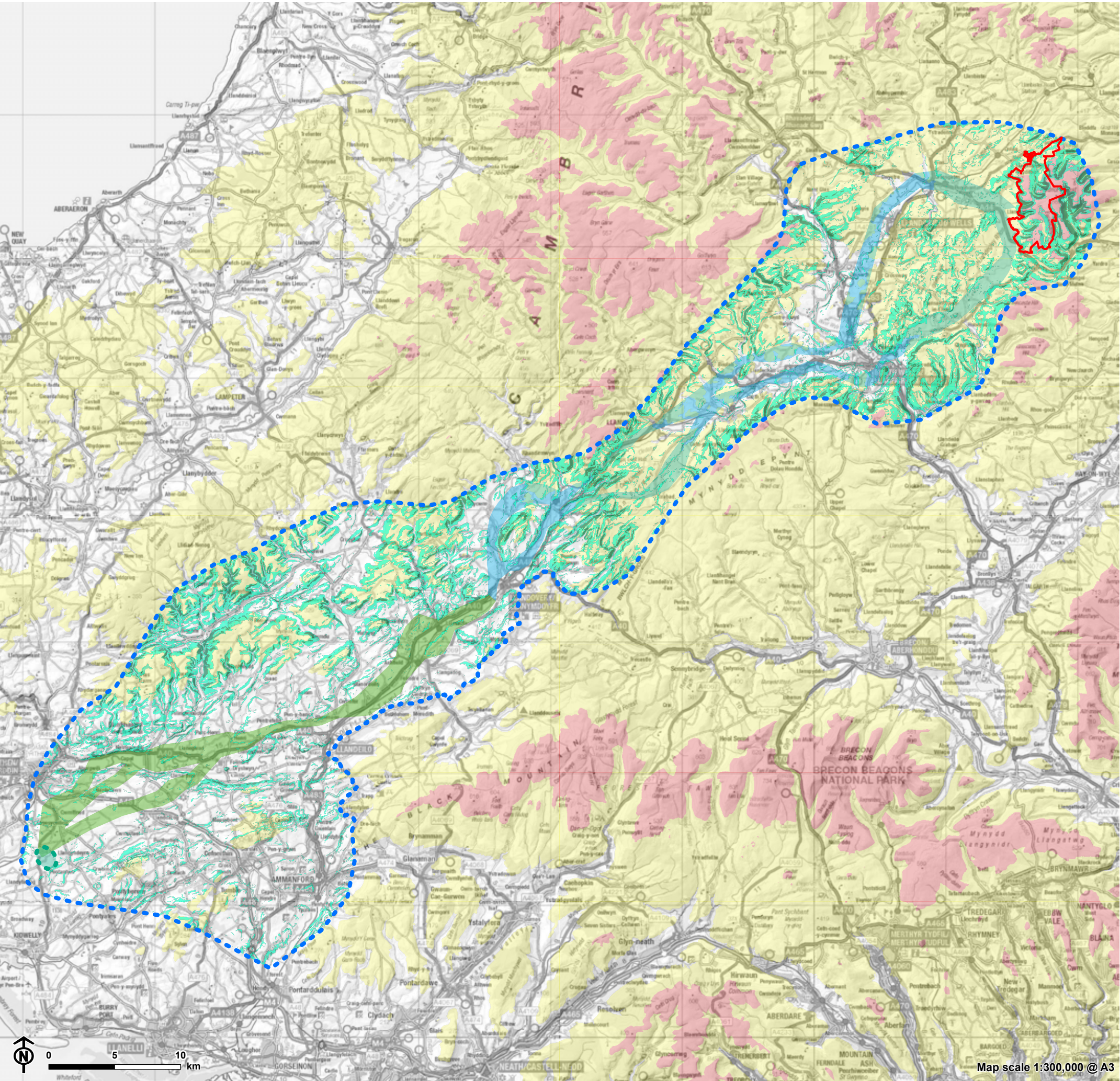


Figure 4.2.2: Considerations Influencing Corridor Option Selection

Elevation and Slope

- Nant Mithil Energy Park
- Study Area
- Substation Siting Area

Route Corridors

- Section A
- Section B

Slope

- 10 - 22 degrees
- > 22 degrees

Elevation (AOD)

- 200 to 450m
- > 450m

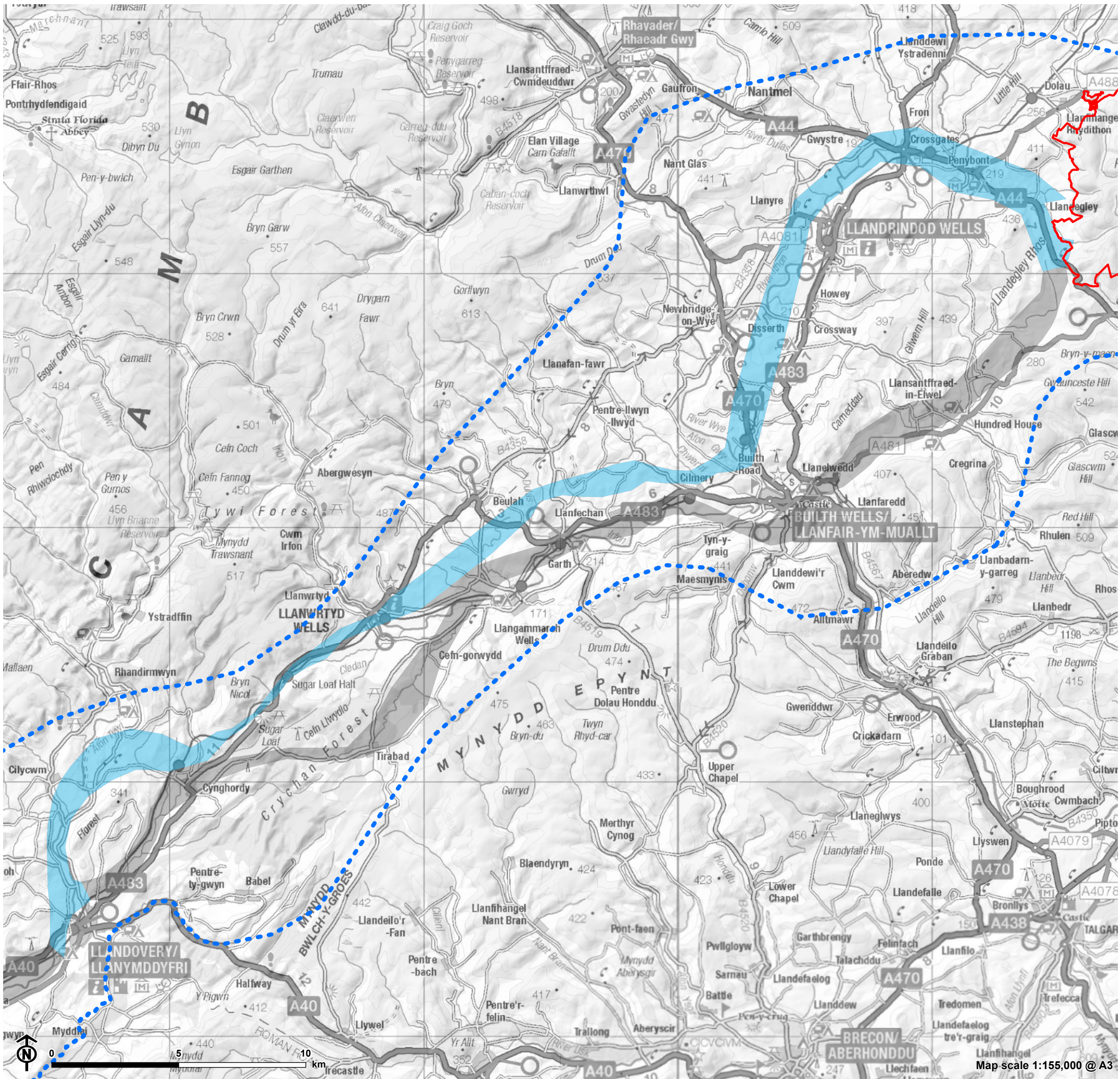


Figure 4.3: Corridor Options (Individual)

Route Option: A1a

- Nant Mithil Energy Park
- Study Area
- Corridor Options
- Corridor Option A1a
- Other Corridor Options

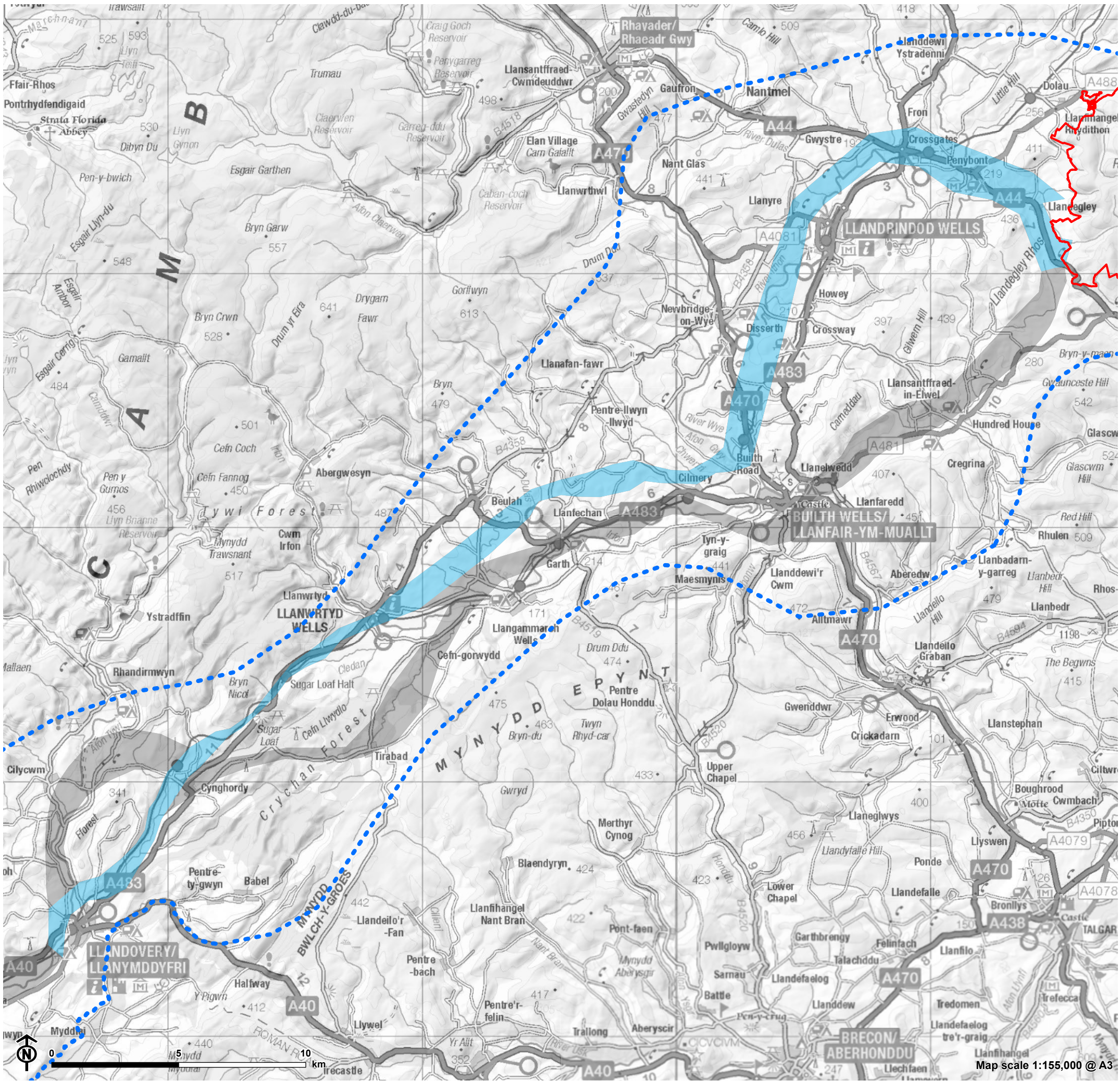


Figure 4.3: Corridor Options (Individual)

Route Option: A1b

- Nant Mithil Energy Park
- Study Area
- Corridor Options
 - Corridor Option A1b
 - Other Corridor Options

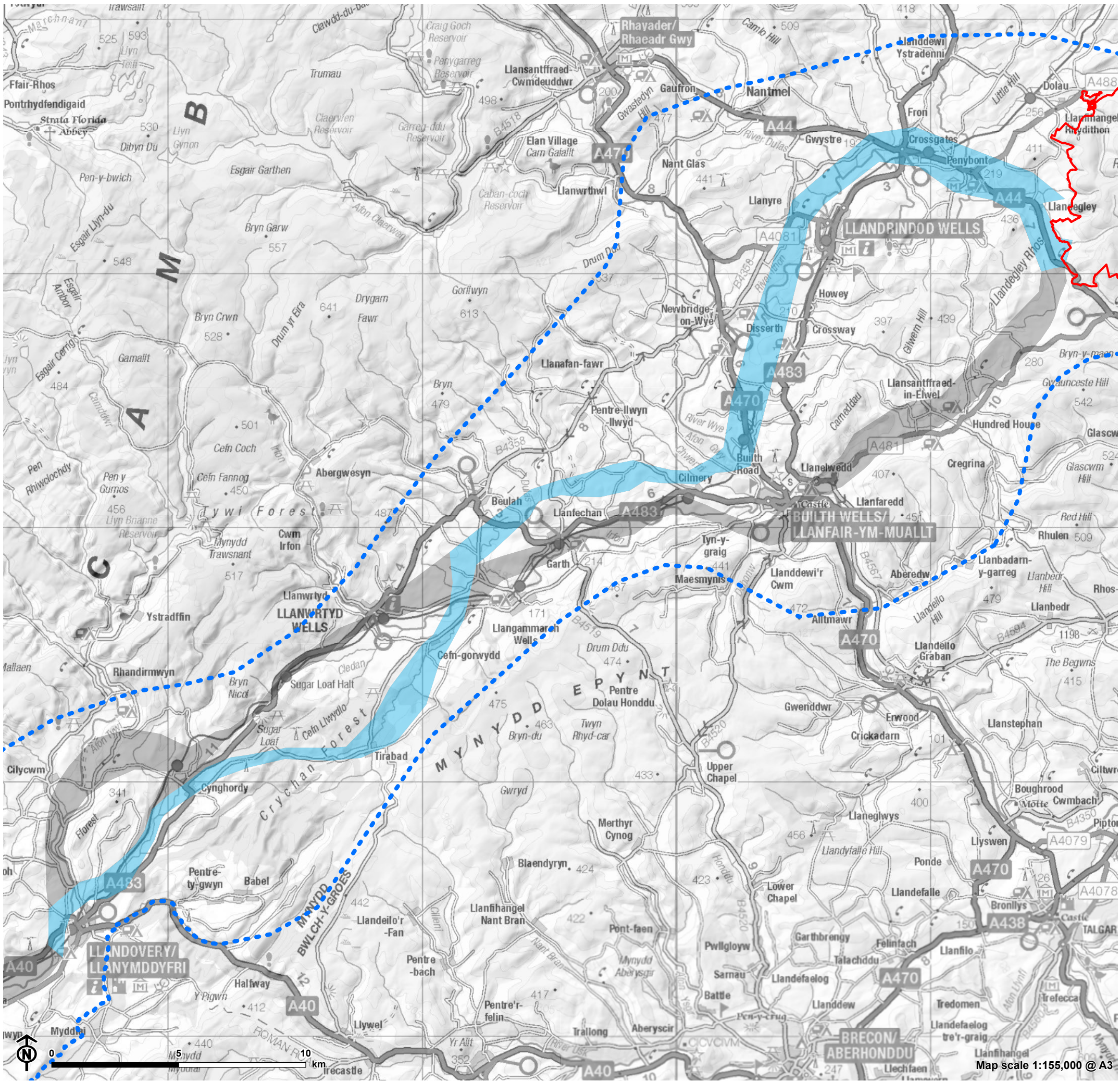


Figure 4.3: Corridor Options (Individual)

Route Option: A1c

- Nant Mithil Energy Park
- Study Area
- Corridor Options
 - Corridor Option A1c
 - Other Corridor Options

Map scale 1:155,000 @ A3

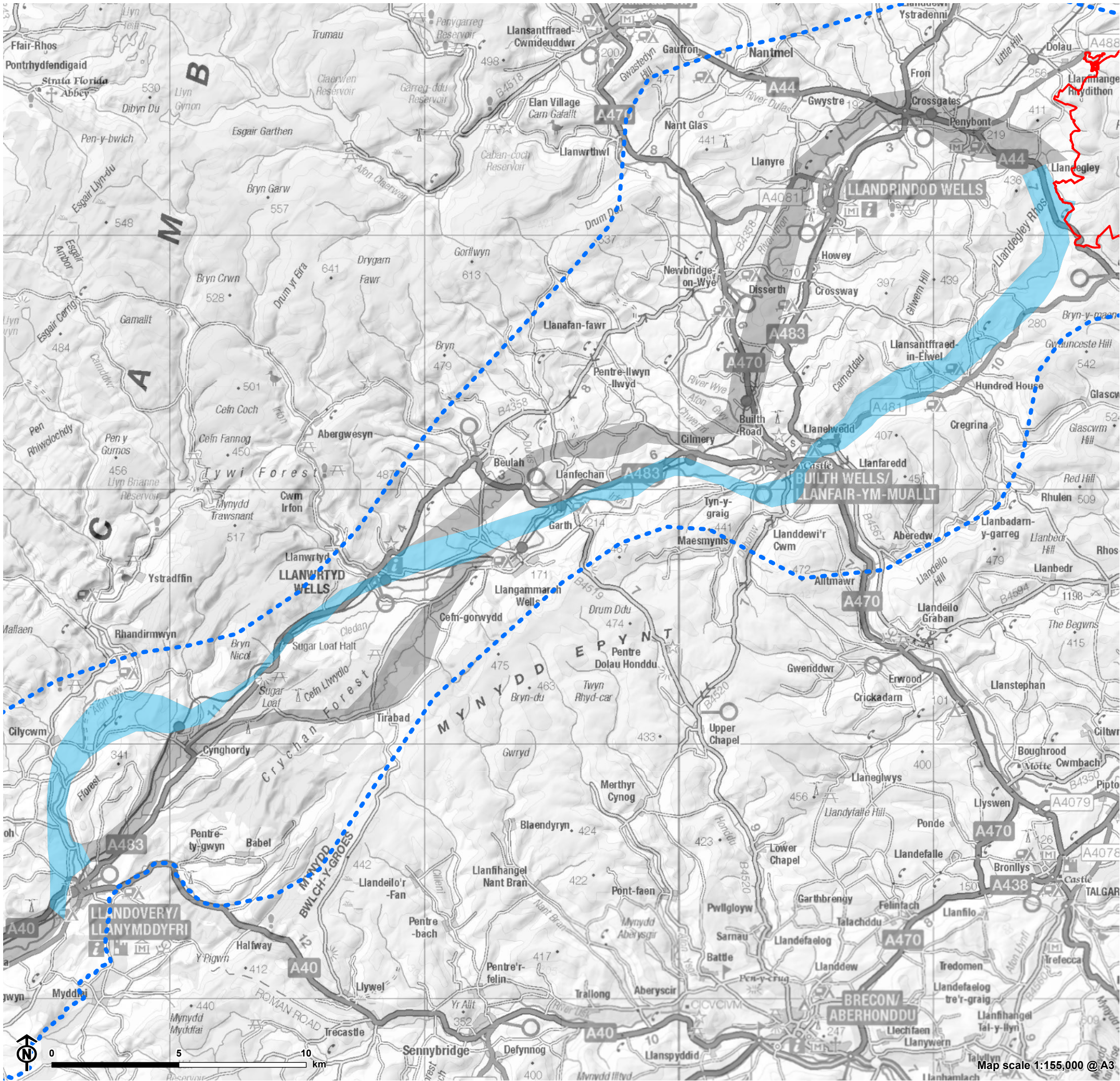


Figure 4.3: Corridor Options (Individual)

Route Option: A2a

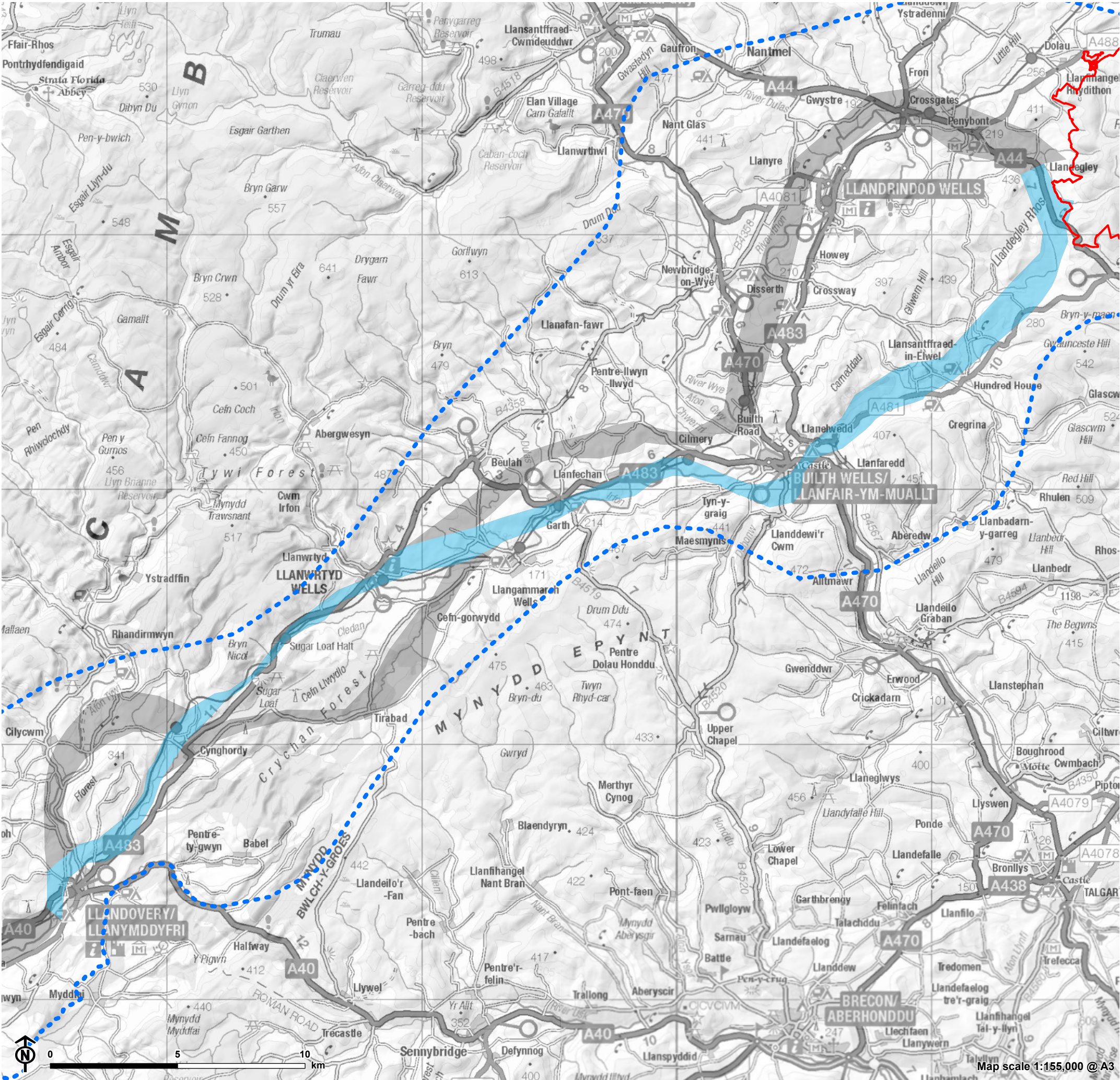
- Nant Mithil Energy Park
- Study Area
- Corridor Options
 - Corridor Option A2a
 - Other Corridor Options

Map scale 1:155,000 @ A3

Figure 4.3: Corridor Options (Individual)

Route Option: A2b

- Nant Mithil Energy Park
- Study Area
- Corridor Options
 - Corridor Option A2b
 - Other Corridor Options



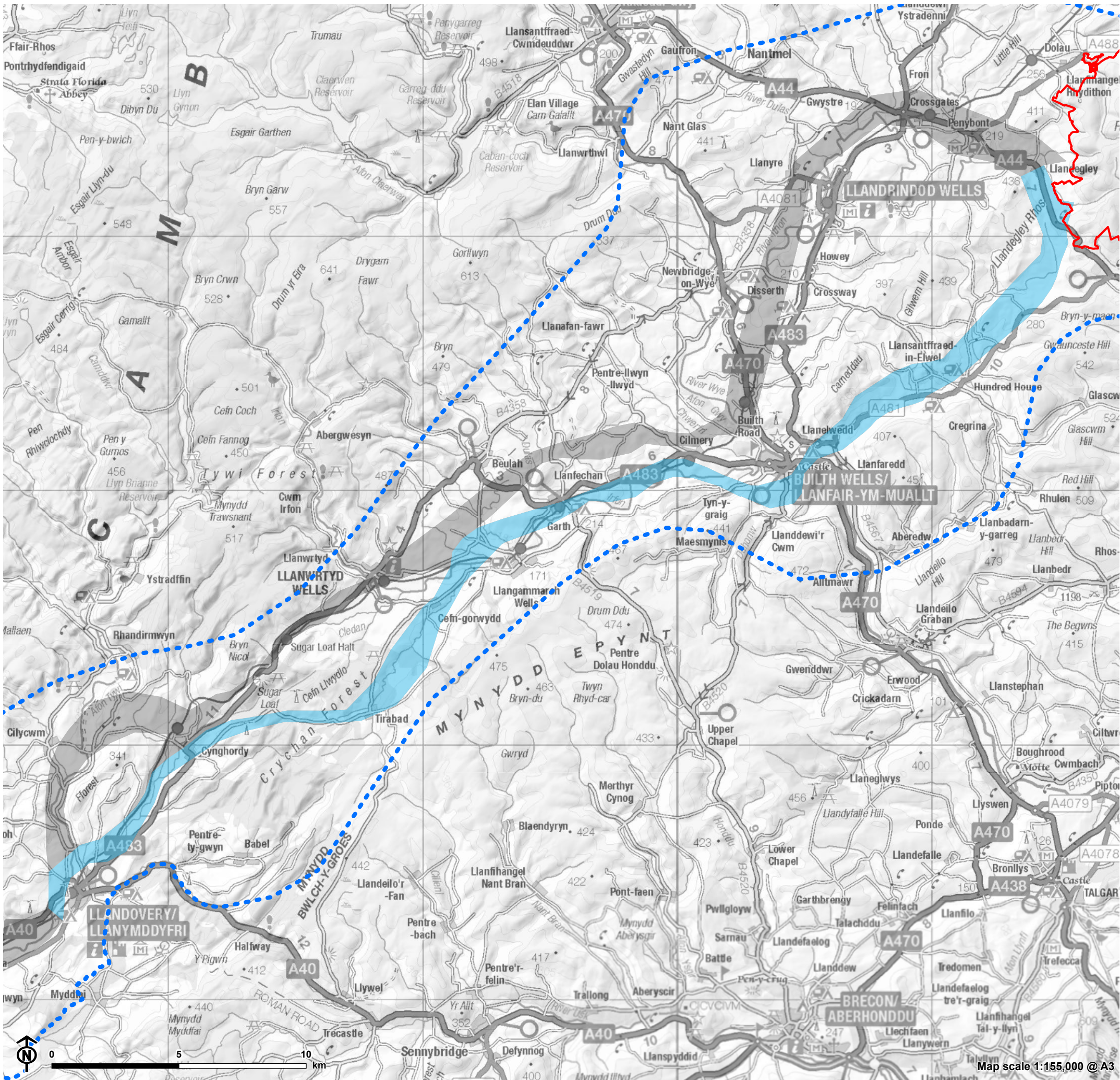


Figure 4.3: Corridor Options (Individual)

Route Option: A2c

Nant Mithil Energy Park

Study Area

Corridor Options

Corridor Option A2c

Other Corridor Options

Map scale 1:155,000 @ A3

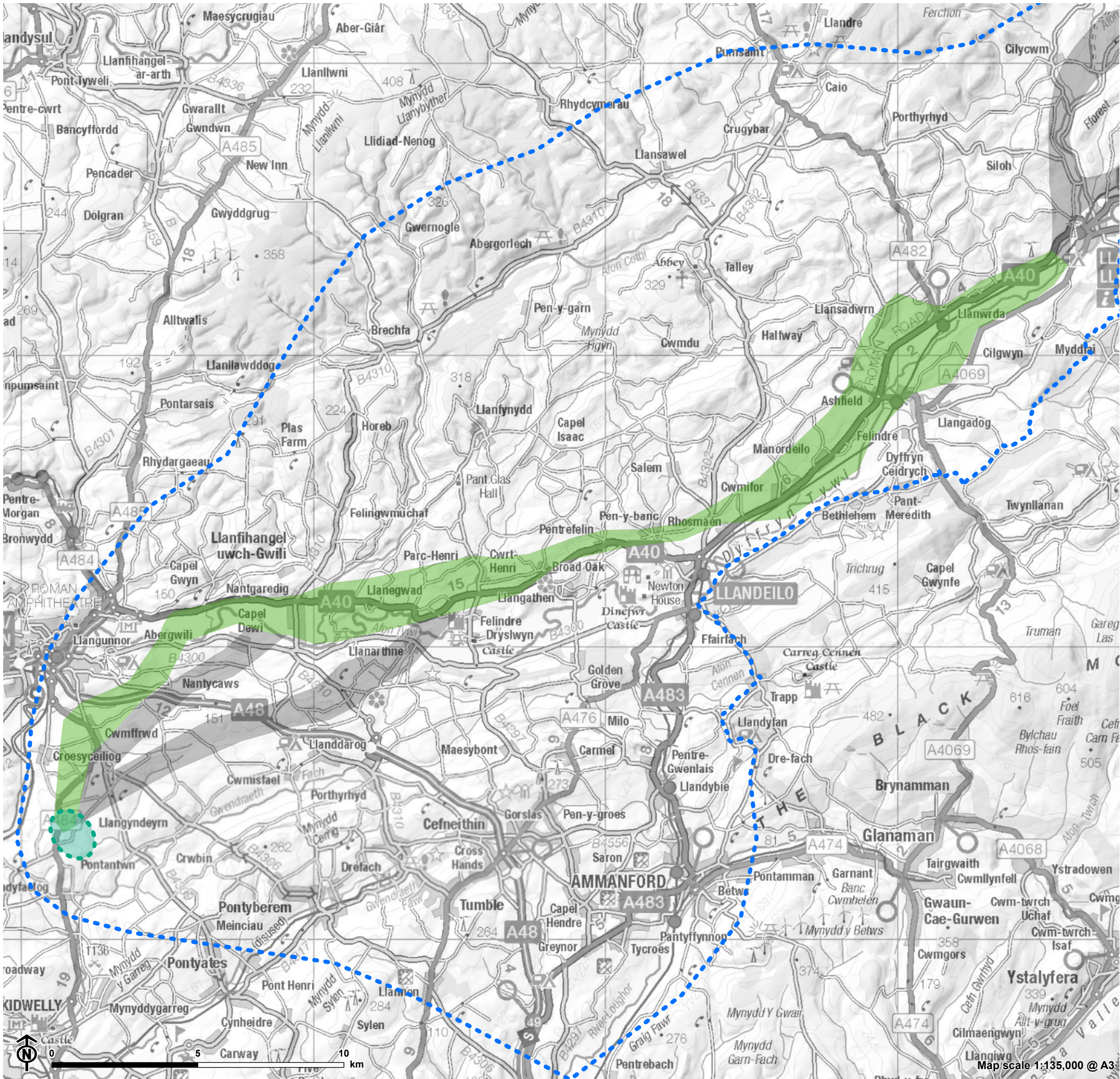


Figure 4.3: Corridor Options (Individual)

Route Option: B1

- Study Area
- Substation Siting Area
- Corridor Options
 - Corridor Option B1
 - Other Corridor Options

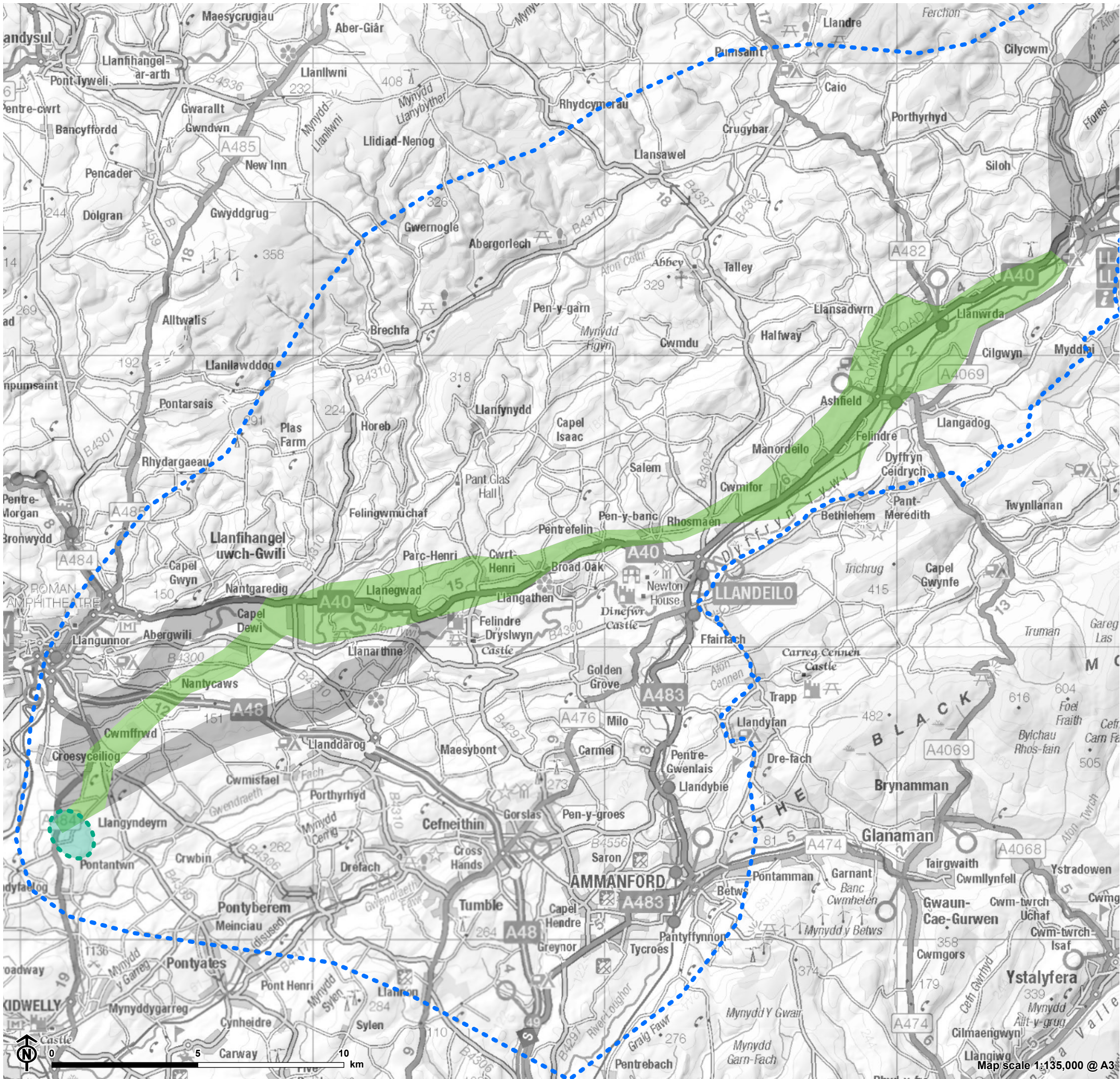


Figure 4.3: Corridor Options (Individual)

Route Option: B2

- Study Area
- Substation Siting Area
- Corridor Options
 - Corridor Option B2
 - Other Corridor Options

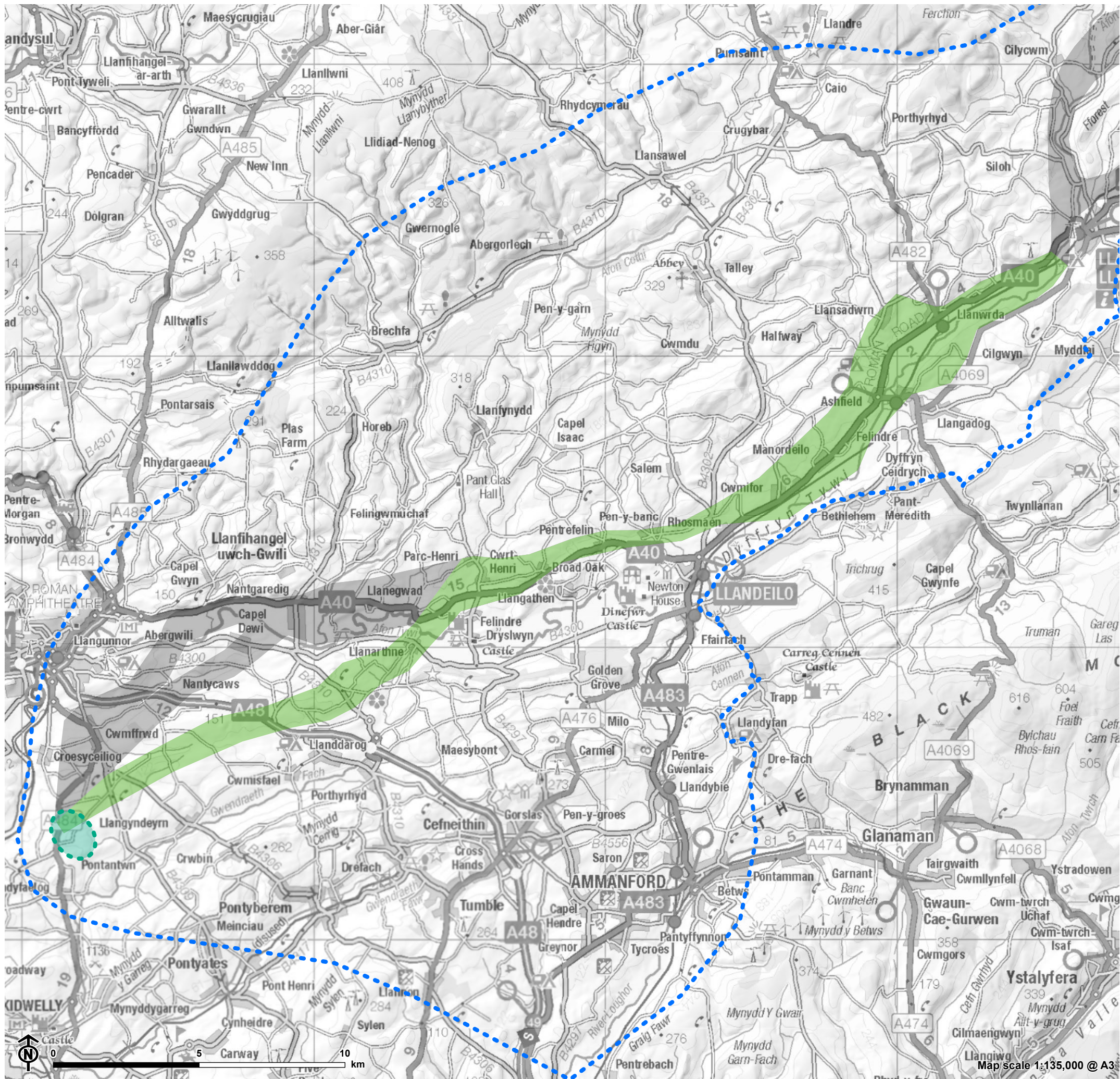


Figure 4.3: Corridor Options (Individual)

Route Option: B3

- Study Area
- Substation Siting Area
- Corridor Options
 - Corridor Option B3
 - Other Corridor Options

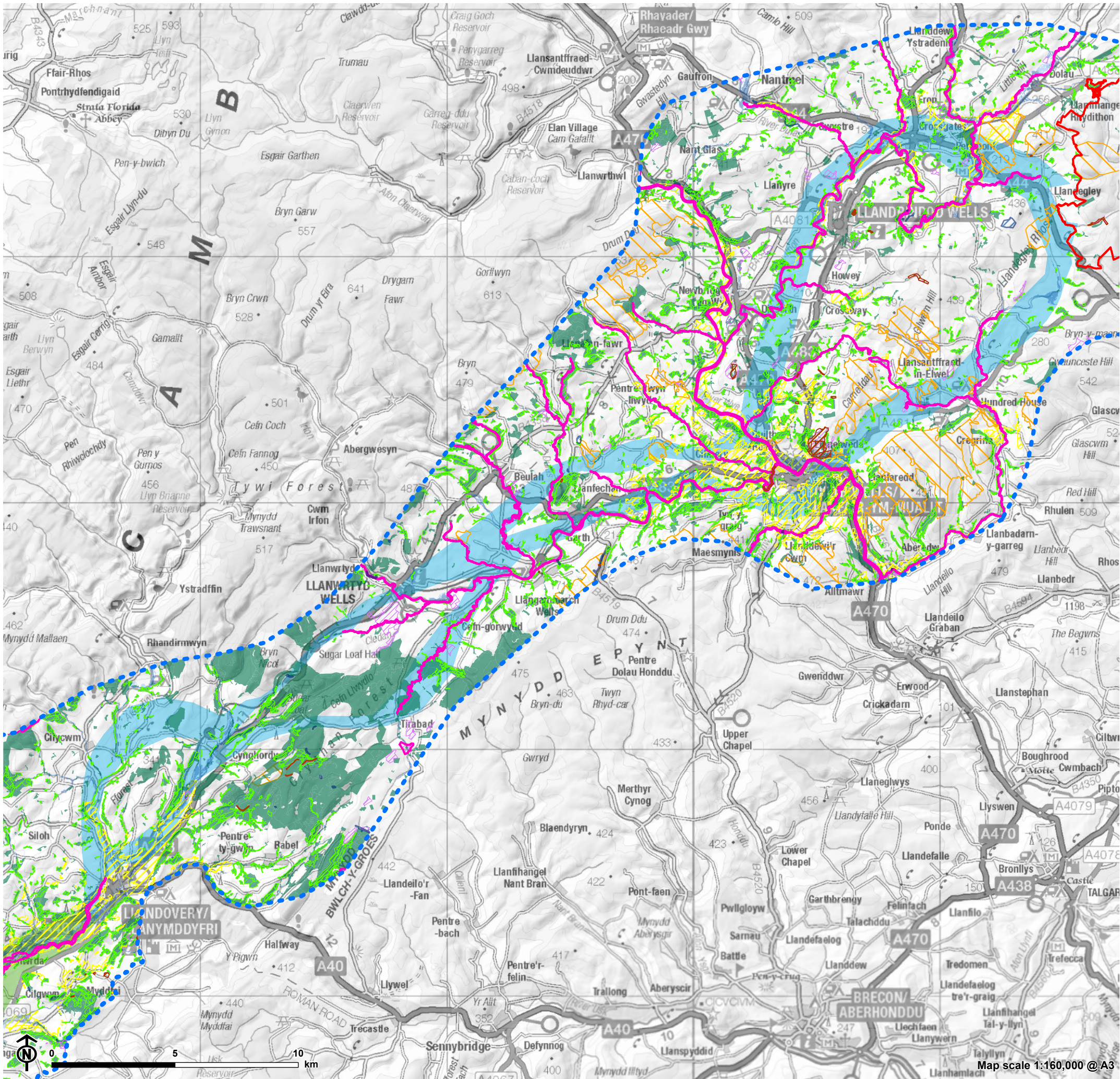


Figure 4-4-1: Criteria and Sub-criteria used in Corridor Appraisal: Section A

Biodiversity, Geological Conservation, Forestry, Land Use and Flood Risk

- Nant Mithil Energy Park
- Study Area
- Route Corridors**
 - Section A
 - Section B
- Biodiversity and Geological Conservation**
 - Special Area of Conservation (SAC)
 - Site of Special Scientific Interest (SSSI)
 - Geological Conservation Review Sites (GCRS)
 - Regional Important Geological and Geomorphological Sites (RIGS)
- Forestry**
 - National Forest Inventory Woodland 2020
 - Ancient Woodland Inventory (AWI)
- Flood Risk**
 - High
 - Medium
- Land Use**
 - Best and Most Versatile (BMV) agricultural land (Grade 1,2,3a)
 - Common Land

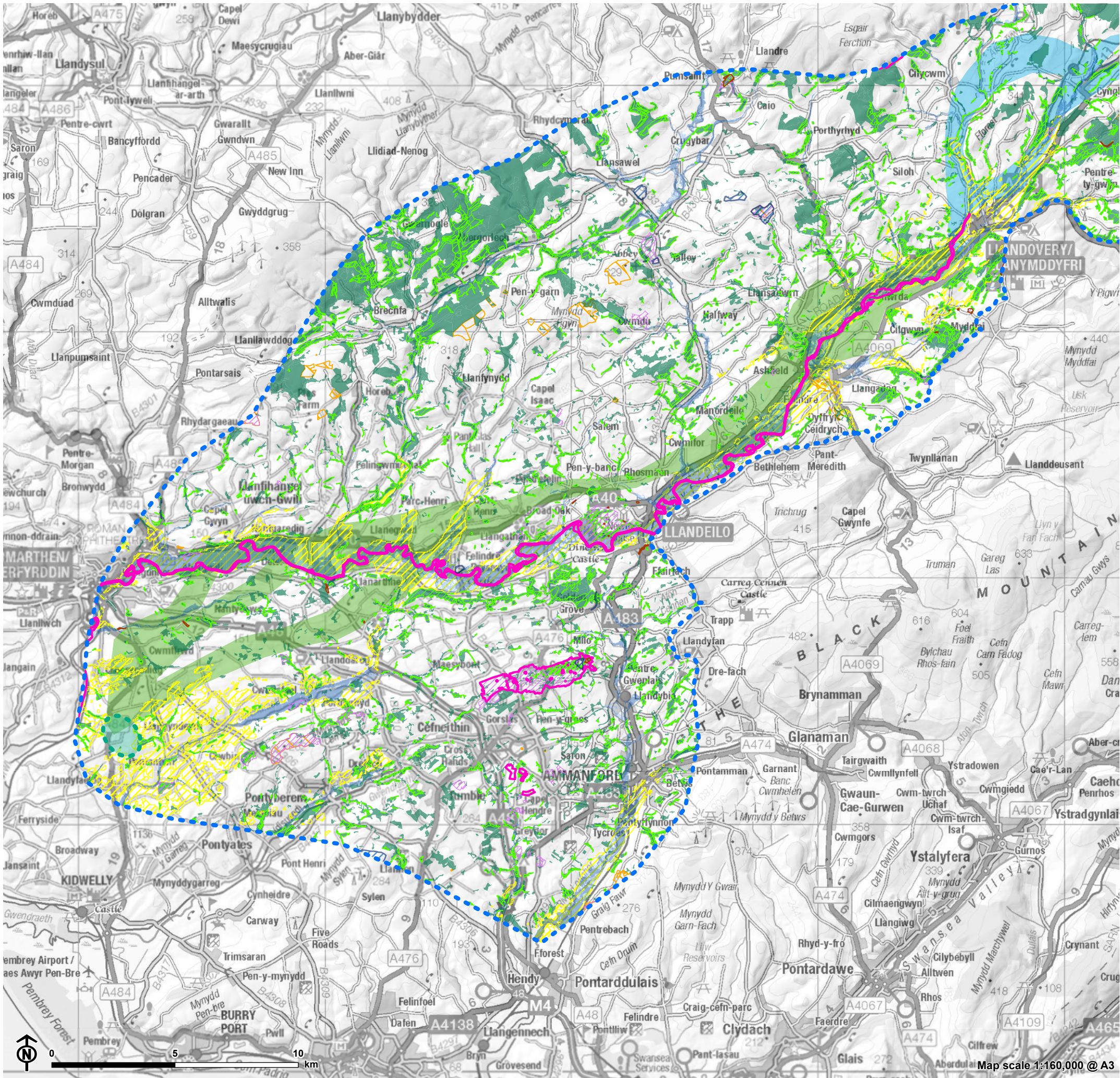


Figure 4-4-1: Criteria and Sub-criteria used in Corridor Appraisal: Section B

Biodiversity, Geological Conservation, Forestry, Land Use and Flood Risk

- Study Area
- Substation Siting Area
- Route Corridors
 - Section A
 - Section B
- Biodiversity and Geological Conservation
 - Special Area of Conservation (SAC)
 - Site of Special Scientific Interest (SSSI)
 - Geological Conservation Review Sites (GCRS)
 - Regional Important Geological and Geomorphological Sites (RIGS)
- Forestry
 - National Forest Inventory Woodland 2020
 - Ancient Woodland Inventory (AWI)
- Flood Risk
 - High
 - Medium
- Land Use
 - Best and Most Versatile (BMV) agricultural land (Grade 1,2,3a)
 - Common Land

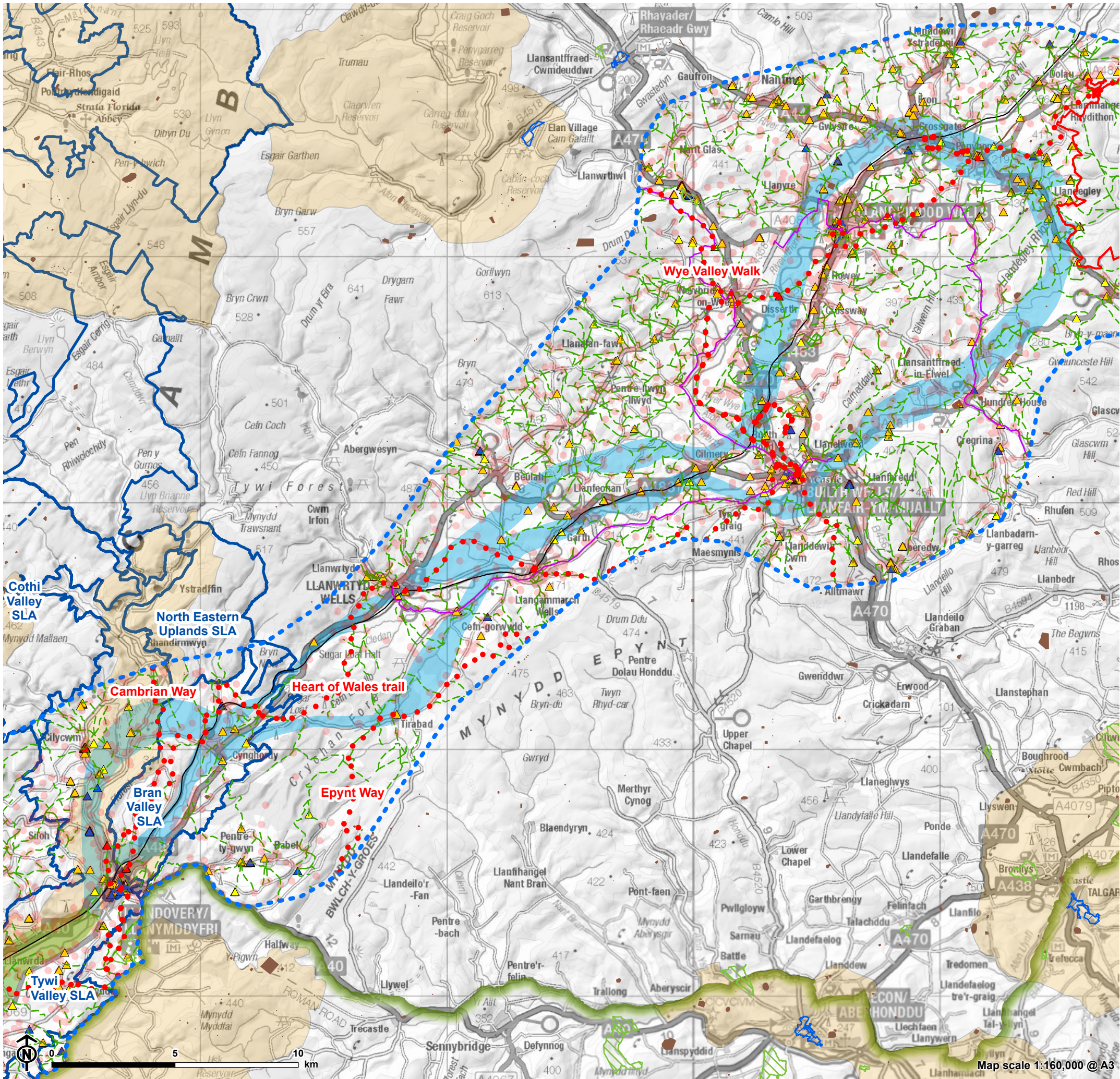


Figure 4-4-2: Criteria and Sub-criteria used in Corridor Appraisal: Section A

Cultural Heritage and Landscape and Visual Amenity

- Nant Mithil Energy Park
- Study Area
- Route Corridors
 - Section A
 - Section B
- Cultural Heritage
 - Scheduled Monument
 - Registered Historic Parks and Garden
 - Registered Historic Landscape (RHL)
 - Listed Building Grade I
 - Listed Building Grade II*
 - Listed Building Grade II
 - Conservation Area
- Landscape
 - Brecon Beacons National Park
 - Special Landscape Area (SLA)
 - Long distance trail
 - Public Right of Way (PRoW)
 - National Cycle Path
 - Railway
 - Residential Visual Amenity with '150m trigger for consideration zone'

Note:
The following have not been presented as discretely mapped features in this figure:

Landmap and Landscape Character Areas: due to the number and extent of these, displaying them would either compromise the legibility of the figure and/or they would need to be displayed over multiple figures

Viewpoints, Tourist Attractions and Recreational Areas: the relevant features are not the subject of any known GIS datasets, and they were identified and considered via other means for appraisals (including reference to Ordnance Survey basemapping)

Public roads, including tourist corridors, and railways: these are already present within Ordnance Survey basemapping

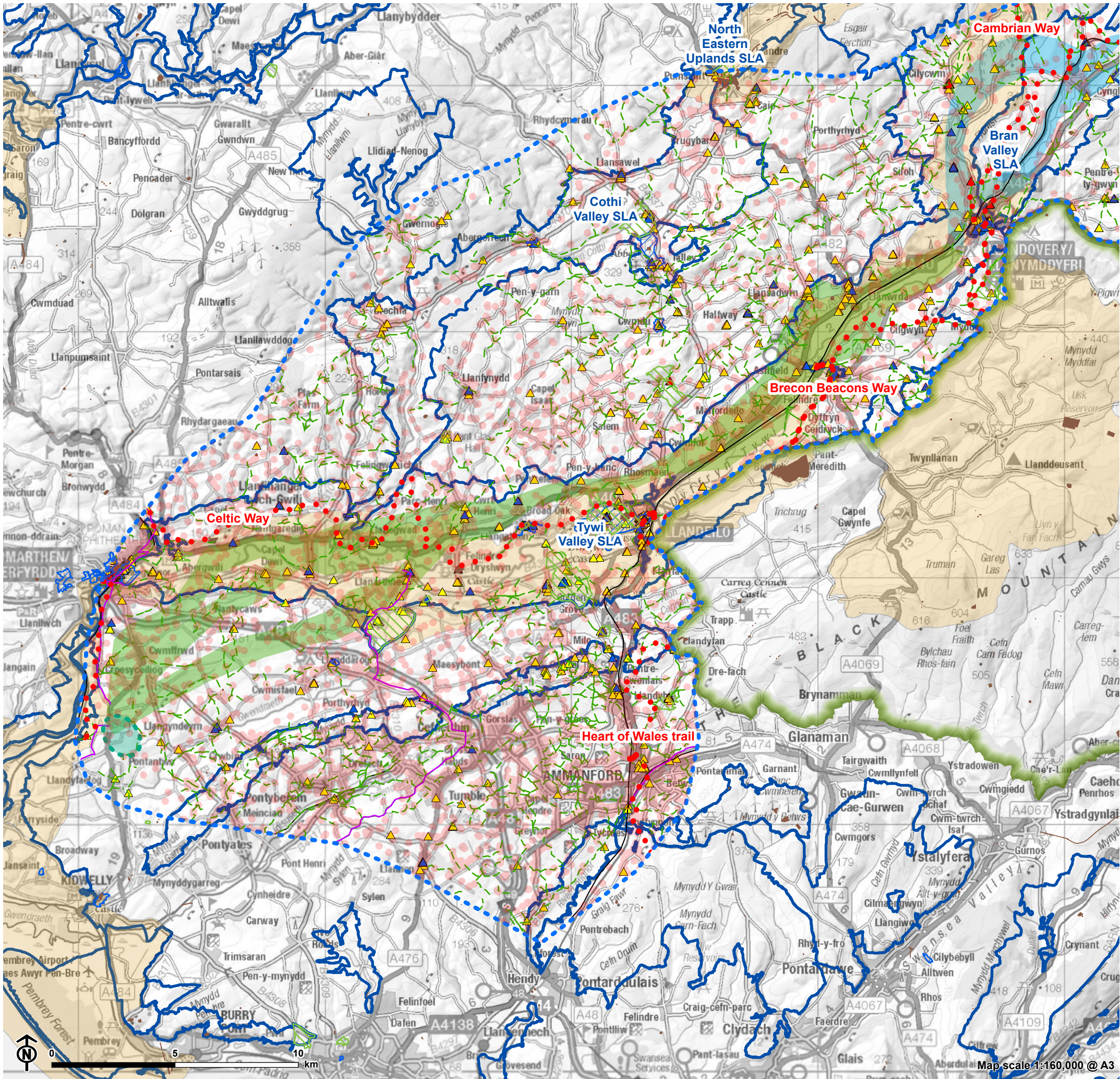


Figure 4-4-2: Criteria and Sub-criteria used in Corridor Appraisal: Section B

Cultural Heritage and Landscape and Visual Amenity

- Study Area
- Substation Siting Area
- Route Corridors
 - Section A
 - Section B
- Cultural Heritage
 - Scheduled Monument
 - Registered Historic Parks and Garden
 - Registered Historic Landscape (RHL)
 - Listed Building Grade I
 - Listed Building Grade II*
 - Listed Building Grade II
 - Conservation Area
- Landscape
 - Brecon Beacons National Park
 - Special Landscape Area (SLA)
 - Long distance trail
 - Public Right of Way (PRoW)
 - National Cycle Path
 - Railway
 - Residential Visual Amenity with '150m trigger for consideration zone'

Note:
The following have not been presented as discretely mapped features in this figure:

Landmap and Landscape Character Areas: due to the number and extent of these, displaying them would either compromise the legibility of the figure and/or they would need to be displayed over multiple figures

Viewpoints, Tourist Attractions and Recreational Areas: the relevant features are not the subject of any known GIS datasets, and they were identified and considered via other means for appraisals (including reference to Ordnance Survey basemapping)

Public roads, including tourist corridors, and railways: these are already present within Ordnance Survey basemapping

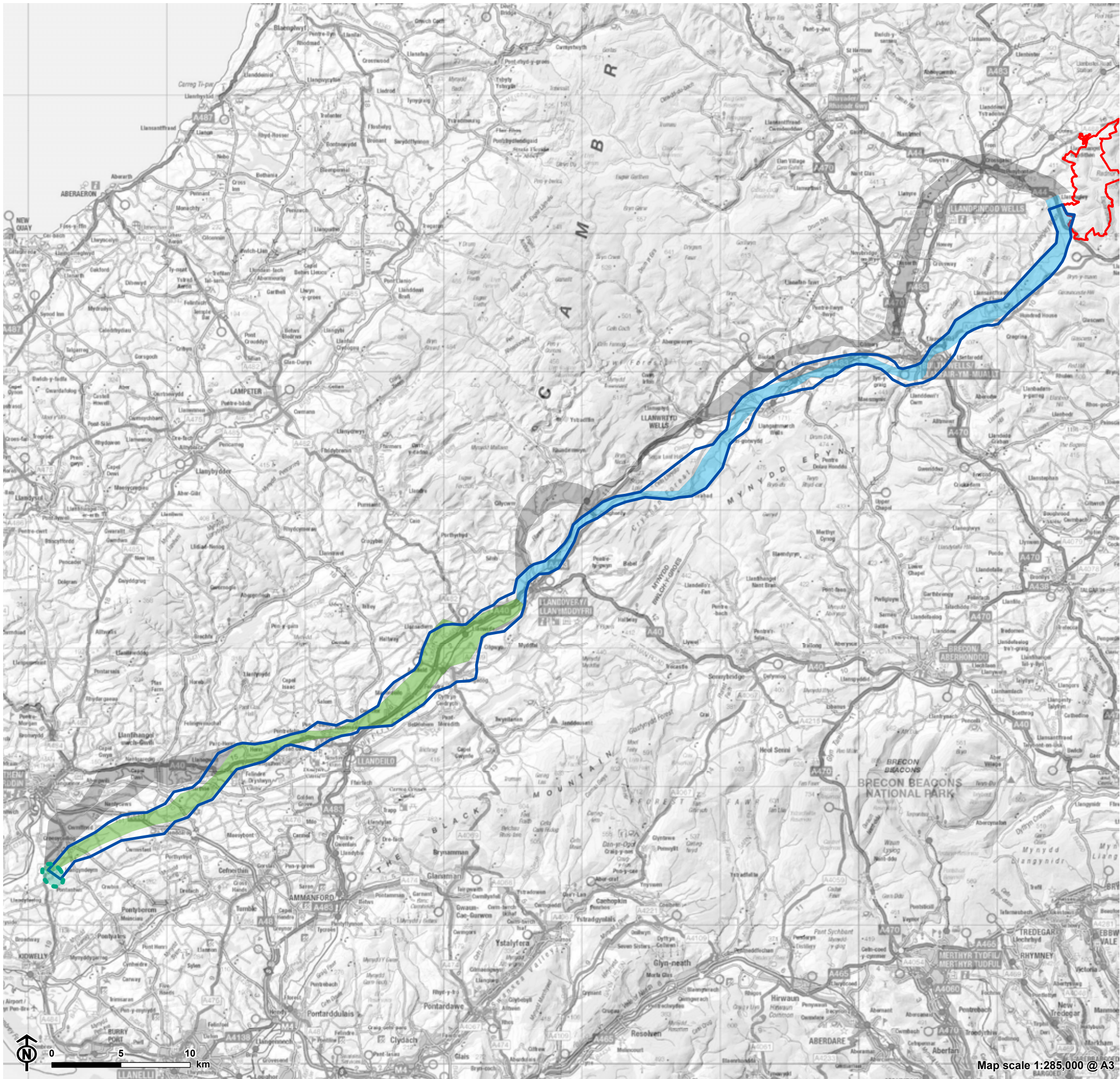


Figure 4.5: Preferred Corridor

- Nant Mithil Energy Park
- Substation Siting Area
- Preferred Corridor
- Corridor Option A2c
- Corridor Option B3
- Other Corridor Options